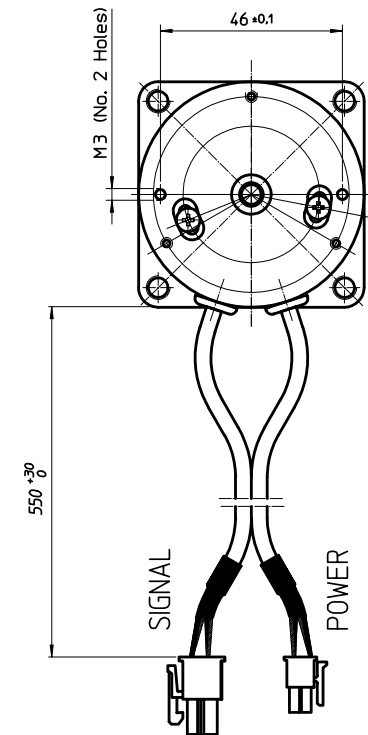
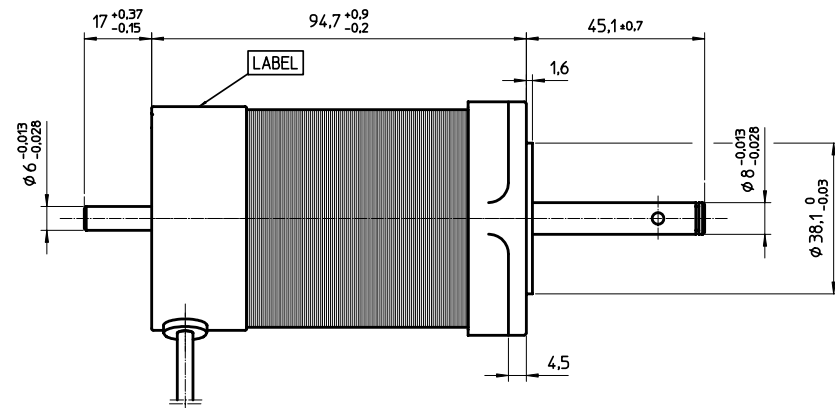
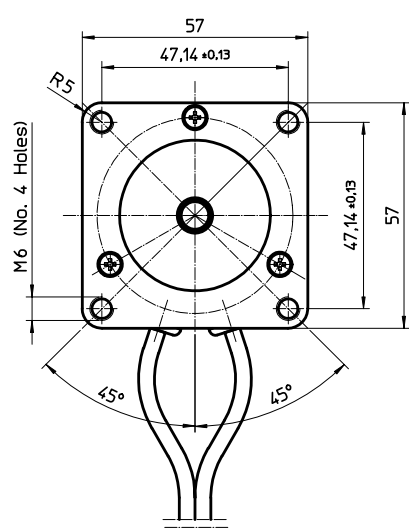


TUTTI I DIRITTI SONO RISERVATI. Questo disegno e' di proprieta' esclusiva della M.A.E. S.p.A. Il disegno non potra' per intero essere copiato, riprodotto, comunicato, rivelato o terzi. Utilizzato sotto qualsiasi forma, anche soltanto sperimentale, senza esplicita autorizzazione scritta della M.A.E. S.p.A. e a richiesta dovra' essere prontamente restituito alla M.A.E. S.p.A.



NON-METALLIC MATERIALS PART LIST - UL REFERENCES

MAE P/N	Description	Manufacturer	Ref. Materials	UL File
10149	Copper wire	Irce S.p.A.	Salflex 155	E60641
B5189	Slot insulating	System components	N.M. S125	E196122
SK3797/2	Winding frame	Radincovacips S.p.A.	Radiflam A RV250 AF333 Black	E116324
5885	Sensor holder	General Electric	Lexan 3412R Black	E45329R
SK3797/9	Hall sensor retention sleeve	Elektrozubehor	PF-B 25.4	E35586
SK3797/6	Printed circuit	Tekart di Legnoli & C. snc	FR4 UL94-V0	E102166
SK3797/7	Signal cabling	Alpha wire	24 AWG xtra Guard 1 shielded	E163860
SK3797/3	Power cabling	Alpha wire	18 AWG xtra Guard 1 shielded	E163860
SK3797/10	Insulating header	System components	N.M. S125	E196122
SK3797/11	Tie wrapper	Hellermann	T18R	E85319
SK3797/8	Insulating header	System components	N.M. S125	E196122
3437745M	Insulating tape	3M	3MScotch1350	E17350
SK3797/14	Thermal protection	Texas Instruments Inc	2MM T110-70	E15962
SK3797/13	Signal cabling connector	MoLEX	P/N 43025-0800 UL94-V0 Polystere	E29179
SK3797/12	Power cabling connector	MoLEX	P/N 39-01-2045 UL94-V0 Nylon	E29179
SK3797/14	Stator and Hall sensor Steeve	Elektrozubehor	PF-B 25.4	E35586

CONNECTOR - MOLEX 39-01-2045
PIN - MOLEX (HSC) 44476-1111/1112

CONNECTOR - MOLEX 43025-0800
PIN - MOLEX 43030-0005/0011

MOTOR CONNECTIONS - 39-01-2045				
PIN	WIRE COLOUR	FUNCTION	AWG	
1	WHITE	PHASE R (1)	18	
2	BLACK	PHASE S (2)	18	
3	RED	PHASE T (3)	18	
4	BARE	CABLE SHIELD	18	

SENSOR CONNECTIONS - 43025-0800				
PIN	WIRE COLOUR	FUNCTION	AWG	
1	RED	+5 / +24 VDC	24	
2	BLACK	GND	24	
3	GREEN	HALL A	24	
4	YELLOW	HALL B	24	
5	BLUE	HALL C	24	
6	BARE	CABLE SHIELD	24	
7	BROWN	TC (130°)	24	
8	ORANGE	TC (130°)	24	

SPECIFICATION:	Unita'	Min	Tipico	Max	NOTE
STALL CONTINUOUS TORQUE	1 Nm	/	0.39	/	1 - ambient temp 40 °C windings temp 120 °C, with motor mounted on a flange AL 100 X 100 X 4 mm
NOMINAL SPEED CONTINUOUS TORQUE	1 Nm	/	0.32	/	
MAXIMUM PEAK TORQUE	1 Nm	/	0.98	/	
NOMINAL SPEED	1 RPM	/	4000	/	
TORQUE COSTANT	2 Nm/A	/	0.0484	/	2 - all parts of the motor 20 °C
LOCKED ROTOR NOMINAL CURRENT	2 A	/	8.15	/	
MAX PEAK CURRENT	2 A	/	22.6	/	
F.C.E.M. a 1000 rpm	2 Vrms	3.6	4.0	4.4	
RESISTANCE	2 Ohm	0.21	0.25	0.29	
INDUCTANCE	2 mH	0.88	1.1	1.32	
ROTOR INERTIA	Kg.m ²	/	17.3 · 10 ⁻⁴	/	
FLASH TEST		750 V	- 1"	3 mA	
WEIGHT	Kg	/	1	/	
SCREWING TORQUE	Ncm	80		90	



02				SOSTITUISCE IL CODICE						QUOTA CRITICA
01	Aggiornamento	14/04/04	Conca							QUOTA CRITICA
00	Emissione	09/04/04	Conca	SOSTITUITO DAL CODICE						QUOTA CRITICA
REV.	RICHIESTA MODIFICA	DATA	FIRMA							QUOTA CRITICA
DATA	CONTROLLATO	APPROVATO	RICHIESTA DI NASCITA	PROGETTO N°						
FIRMA			N°	DATA						
DESCRIZIONE PRODOTTO										CF :
BM05/3 UL										CP :
File										Foglio
M.A.E. S.p.A.										
M/CAD/BRUSHLESS/BM05/SK3797/SK3797-UL										

CODICE	Q.TA'	DESCRIZIONE	CP
SK3797/10	14	1 ISULATING HEADER	4
1688	13	3 SPACER	3
23037	-	0.001 gr. PAINT	4
SK3375/10	12	1 REAR BEARING	2
4628	11	1 FRONT BEARING	2
2488	10	1 SPRING	3
4496	9	1 LABEL	4
5848	8	3 SCREW	3
5708	7	2 SCREW	3
SK3797/5	6	1 HALL SENSOR	2
2075	5	2 GROMMET	4
SK3768/3	4	1 FRONT FLANGE	2
SK3768/2	3	1 REAR FLANGE	2
SK3768/4	2	1 ROTOR	2
SK3797/1	1	1 STATOR	2